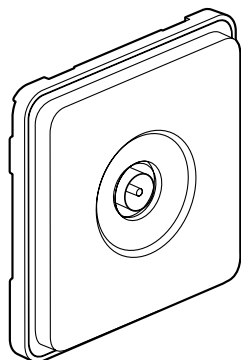


Soliroc™ - IK 10 vandalproof TV socket

Cat. No(s): 778 82



CONTENTS	Page
1. Use	1
2. Range	1
3. Installation	1
4. Overall dimensions	1
5. Connection	2
6. Operation	2
7. Technical data	2
8. Cleaning	2
9. Accessories	3

1. USE

860 MHz Soliroc male TV socket for individual or collective installation with reception:

- via aerial
- via cable TV network
- via collective head station in AMVSB (amplitude modulation).

The new Soliroc™ IK10 programme guarantees robust impact resistance in environments that are hazardous or unsupervised, whether indoors or outdoors (warehouses, public buildings, motorway services, offices shops, schools, confinement institutions, prisons, etc.).

The 5 commitments of the SOLIROC range

Security: The IK10 rating (20 joule impact force) guarantees optimal impact resistance and protection against vandalism. It is impossible to tear off a SOLIROC product due to the use of four zamak sealing plugs pressed on the plate (removable only by drilling).

Reliability: The IP55 rating guarantees a long useful lifetime, whether indoors or outdoors. All external parts are made of zamak for optimal robustness.


Practicality: The plate is thin, thereby limiting the amount of possible grip and reducing the risk of it being torn off. Minimal space exists between parts, guaranteed by the IP5X rating (impenetrable by solid bodies greater than 1 mm in diameter and protected against dust).

Installation: Depends on the nature of the building. We recommend using 50 mm-deep multi-material or concrete BATIBOX mounting boxes (40 mm accepted). To guarantee the best tear-off resistance:

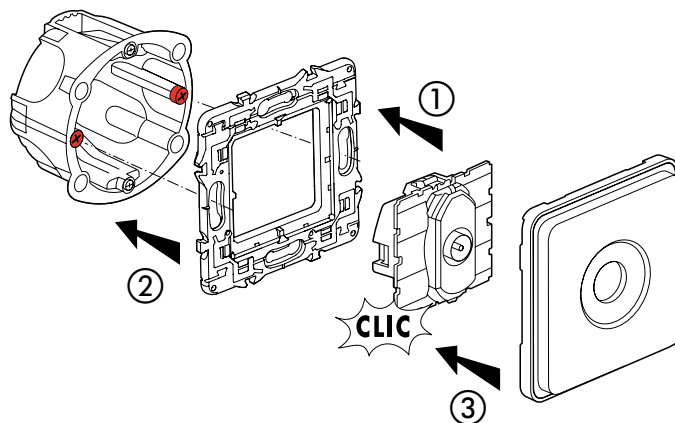
- Attach the SOLIROC plates using 4 standard screws (4 mm diameter, 40 mm length).
- Select wall plugs according to the nature of the walls. For concrete walls, we recommend expanding nylon wall plugs (6 mm diameter, useful length 40 mm).

Quality control: factory inspection according to ISO 9001/9002 procedures.

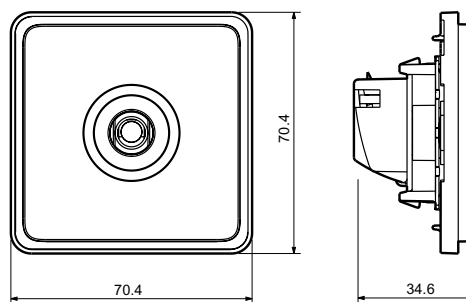
2. RANGE

	Designation	Cat. No.	Number of modules	Weight (g)
	0 - 24 MHz male TV socket	778 82	2	130

3. INSTALLATION



4. OVERALL DIMENSIONS

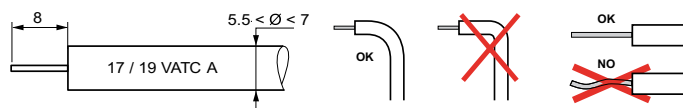


Soliroc™ - IK 10 vandalproof TV socket

Cat. No(s): 778 82

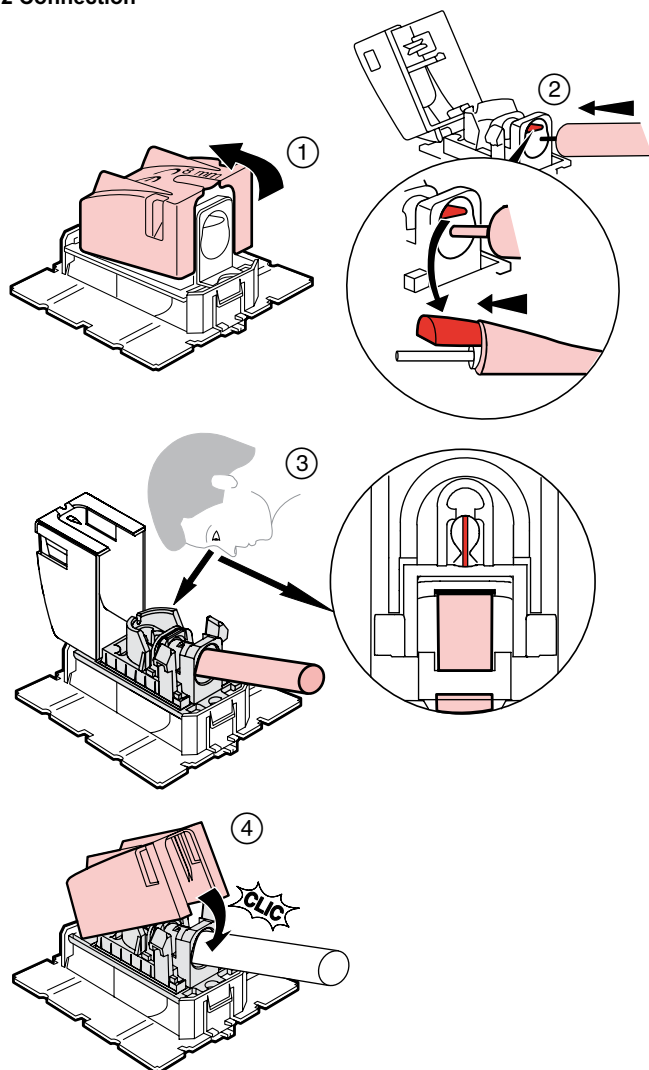
5. CONNECTION

5.1 Cable preparation



To avoid a break in impedance and therefore reduced performance caused by coaxial cable distortion, allow the maximum possible radius.

5.2 Connection



6. OPERATION

Coax Z = 75 Ω	Attenuation	500 mA	Control	Channel 1	RD Channel	VHF Channel	UHF Channel	SAT Channel (IF)
	—	—	22 / 0.6	47 - 68	87.5 - 108	120 - 470	470 - 832	950 - 2400
	dB	mA	KHz / V	MHz	MHz	MHz	MHz	MHz
				1	1	1	1	1.5

7. TECHNICAL DATA

7.1 Mechanical characteristics

Impact resistance: IK 10

Penetration by solid/liquid bodies: IP 20

7.2 Material characteristics

Mechanism: grey polycarbonate

Rocker: ABS

Sub-plate made of polycarbonate

Surface treatment: copper plating + acid copper plating + matt nickel plating + approximately 0.1 mm thick chrome plating.

Colour: matt chrome grey

SEBS sealing membrane

These devices comply with standard NF EN 62094-1 (2003), degree of severity 850° C for components made of insulating material supporting the current-carrying elements and 650° C for the other components.

7.3 Electrical characteristics

Male TV connector Ø 9.52 mm according to IEC 169+2

Frequency bands: TV 5-68 - 120-862 MHz

FM 87.5 - 108 MHz

Surge impedance 75 Ω

Backward channel on TV connector

Loss through shield: UHF > 65 dB

VHF > 75 dB

max Ø of incoming cable on input: 7 mm

7.4 Climatic characteristics

Storage temperature: - 10° C to + 70° C

Operating temperature: - 5° C to + 40° C

8. CLEANING

Warning: Conduct preliminary tests before using any specific cleaning products.

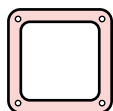
Soliroc™ - IK 10 vandalproof TV socket

Cat. No(s): 778 82

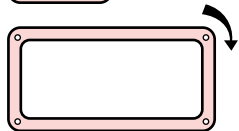
9. ACCESSORIES

9.1 Foams seals

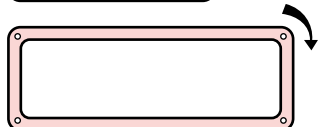
Material: EPDM (Ethylene, Propylene, Diene, Monomer).
Compensates for major wall defects.



778 85
1-gang



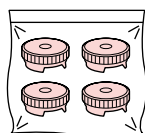
778 86
2-gang (horizontal/vertical)



778 87
3-gang (horizontal/vertical)

9.2 Sealing plug

Spare plugs delivered in bags of 4, with 5 bags to a box and 10 boxes to a carton.



778 96

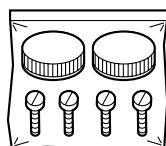
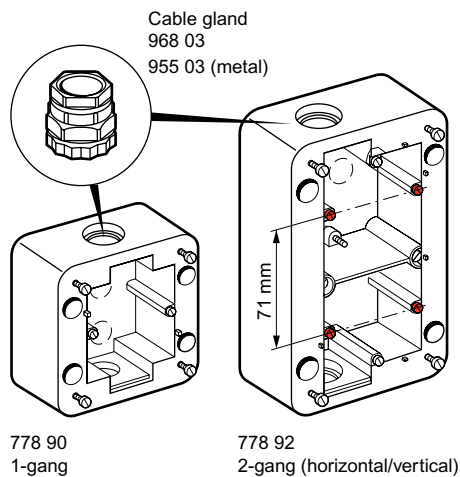
9.3 Surface-mounting frames

Material: polyester

Max. depth: 38 mm

ISO 20 cable glands can be mounted:

Cat. No. 968 03 (+ nut 968 43) and Cat. No. 955 03 (+ nut 979 83)



Supplied with a bag
containing 2 plugs
and 4 screws.