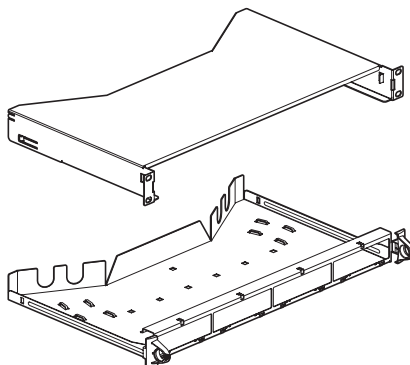


Fibre optic drawer

Catalogue number(s): 335 10



1. USE

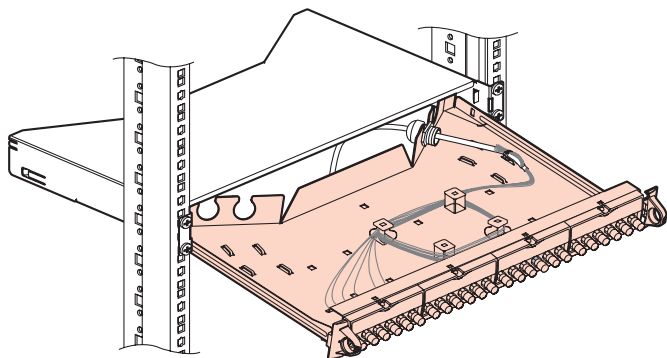
Tilting, modular 19" fibre optic drawer to be equipped, for easier access to optical fibres.

Supplied with screws and cabling accessories.

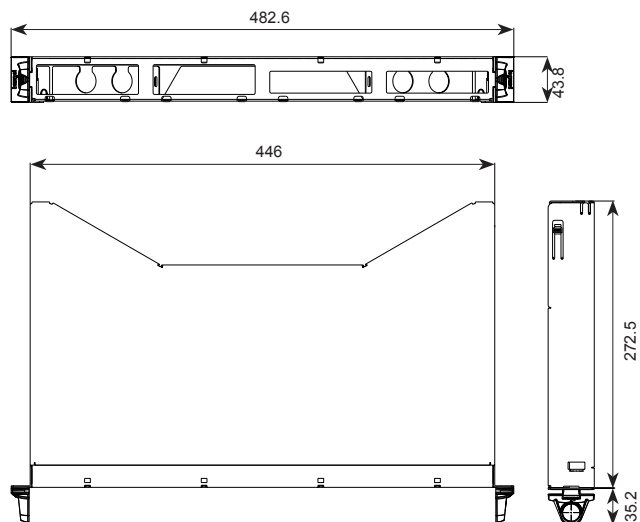
Accommodates up to 4 fibre optic units, 4 cables and 3 splice trays.

Accepts up to 24 ST and SC connectors and up to 48 LC connectors.

2. USUAL CONNECTION



3. OVERALL DIMENSIONS



4. TECHNICAL CHARACTERISTICS

- Fibre optic drawer to be equipped
- Modular sliding drawer
- Swallow-tail design of rear of drawer for easier cable insertion
- End-of-travel stop with 30° tilt
- Maximum capacity:
 - 24 ST and SC connectors
 - 48 LC connectors
- Effective depth: 210 mm
- Height 1U
- Accommodates up to 4 fibre optic units

Supplied with screws and cabling accessories:

For mounting in 19" rack:

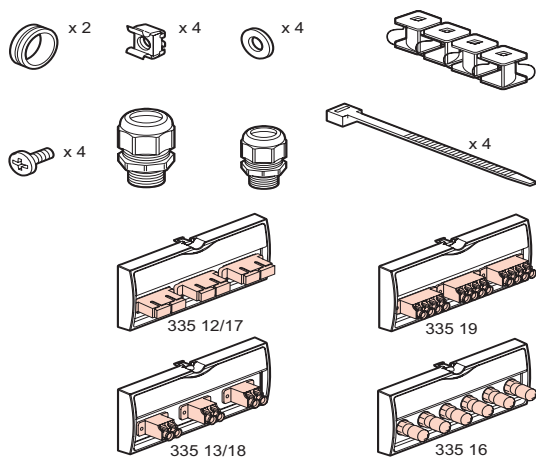
- 4 screw bolts
- 4 washers
- 4 screws

For FO cable:

- 2 cable-glands
- 4 cable ties
- 4 fibre coiling accessories, suitable for mounting and 1/4 turn repositioning
- 2 cable-entry rings
- 1 drawer support to be mounted on the rack
- 1 drawer with stop and 30° tilt at end of travel for easier cabling

5. ACCESSORIES

- Splice tray: 329 07
- single-mode fibre units (9/125 µm)
 - 33513: LC unit for 6 single-mode fibres
 - 33512: SC unit for 6 single-mode fibres
- multi-mode fibre units (62.5 and 50/125 µm)
 - 33516: ST unit for 6 multi-mode fibres
 - 33517: SC unit for 6 multi-mode fibres
 - 33518: LC unit for 6 multi-mode fibres
 - 33519: High-density LC unit for 12 multi-mode fibres



Other characteristics:

- Material: galvanised steel
- weight: 2605 g